

LED

EXPLOSION-PROOF LIGHT FIXTURES

ZONES 1,21 & 2,22

ATEX



CNBOP



**to 170
lm/W**





OUR COMPANY

We are a Polish manufacturer of specialized, industrial lighting fixtures. We have been creating advanced and innovative solutions for over 12 years. We specialize in constructions dedicated to difficult working conditions and harsh environments.

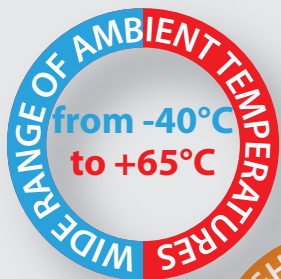
We design, manufacture and sell lighting fixtures dedicated to various market sectors. Our offer is divided into five main divisions: explosion-proof light fittings and accessories, vandal-proof fixtures (for railway infrastructure), custodial fixtures for prisons and penitentiary establishments, heavy-duty light fixtures for industry and tunnel lighting.

We support our clients at each stage of selecting and designing lighting. In cooperation with customers we develop special solutions dedicated to specific projects and applications.

HIGHEST QUALITY

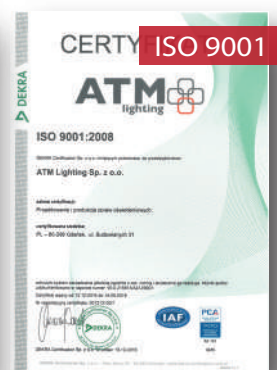
Our range of explosionproof light fittings consists of 2 product series. The **EXF series** is a specialized group of explosion-proof luminaires for the **zone 1,21** of the explosion hazard of gases, vapors and mists of flammable liquids with air. Characteristic feature of this group are special encapsulated LED modules, designed by us for operation in such demanding conditions.

ADVANTAGES OF OUR PRODUCTS



Our Zone 21, 2&22 fixtures **are available with optional** DALI compatible drivers which allows to monitor and control lighting.

For the production we use only the highest quality materials from reputable manufacturers. Thanks to strict quality control procedures, we can offer products that guarantee long and trouble-free operation.



ZONE 1,21 & 2,22

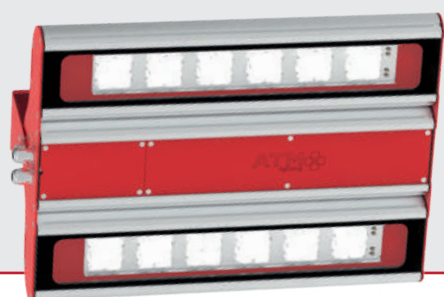
REFINERIES AND FUEL TANKS

EXF explosion-proof light fittings series has been designed for **zones 1,21 & 2,22** of gas and steam of flammables liquids, as well as combustible dusts and fibers explosion hazard areas. The LED modules encapsulation technology ensure safety of operation in an environment of imminent danger.

NEW!

EXF450LED

II 2G Ex eb IIC T5...T4 Gb
II 2D Ex tb IIIC T80...135°C Db



Explosion-proof LED floodlight with a very high luminous flux. Housing is made of anodized aluminum, endcaps painted with modified powder paint. Choice of 5 optics. Optionally, the luminaire can be adapted to work in a three-phase network. There is a possibility to equip the luminaire with explosion-proof breathing plugs (VENT PLUG) and an additional protective grid on the diffuser (PRG).

NEW!

EXF400LED

II 2G Ex eb mb op is IIC T5 Gb
II 2D Ex tb op is IIIC T85°C Db



Housing is made of high quality anodized aluminum. Diffuser is made of polycarbonate or tempered glass. Optional version with DALI interface. The luminaire is available with pictogram on its diffuser.



EXF250LED

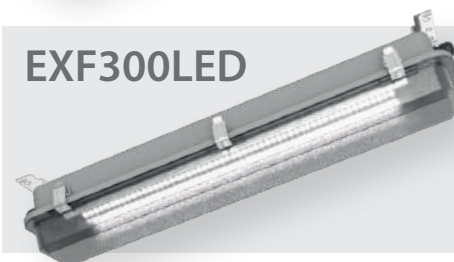
II 2G Ex eb mb op is IIC T5 Gb
II 2D Ex tb op is IIIC T55°C/T70°C Db



Luminaire body is made of GRP, diffuser is made of PMMA or polycarbonate. Optional version with a 3-hour emergency power module or adaptation to work with a central battery.

EXF300LED

II 2G Ex eb mb op is IIC T5 Gb
II 2D Ex tb op is IIIC T55°C/T70°C Db



The body of the luminaire is made of stainless steel painted with modified powder paint. Polycarbonate diffuser. Optional version with a 3-hour emergency power module or adaptation to work with a central battery.

EXF390LED

II 2G Ex eb mb op is IIC T5 Gb
II 2D Ex tb op is IIIC T70°C Db



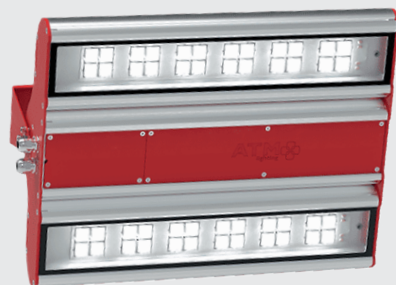
Explosion-proof coffered luminaire in a surface-mounted or recessed version for mounting in a modular or suspended ceiling. Housing made of stainless steel painted with modified powder paint. Diffuser made of PC or tempered glass.

EXL explosion-proof light fittings series has been designed to work for **zones 21 & 2,22** of gas and steam of flammables liquids, as well as combustible dusts and fibers explosion hazard areas.

NEW!

EXL450LED

II 3G Ex ec IIC T6...T4 Gc
II 2D Ex tb IIIC T80...105°C Db



Explosion-proof floodlight with LED modules with a very high luminous flux up to 34000lm. Housing made of anodized aluminum, endcaps painted with modified powder paint. Choice of 5 optics. The luminaire is available in 3 sizes (2,3 and 4 light segments). Optionally, the luminaire can be adapted to work in a three-phase network. There is a possibility to equip the luminaire with explosion-proof breathing plugs (VENT PLUG) and an additional protective grid on the luminaire diffuser (PRG). The floodlight is also available in a version with an additional emergency module, which turns on automatically after a power failure in the network.



EXL450LED-A3

NEW!

EXL400LED

II 3G Ex ec IIC T6/T5 Gc
II 2D Ex tb IIIC T75°C/T100°C Db



Housing made of high quality anodized aluminum. Diffuser made of polycarbonate or tempered glass. Optional version with DALI interface. The luminaire is available with pictogram on its diffuser.



NEW!

EXL400LED-EXIT

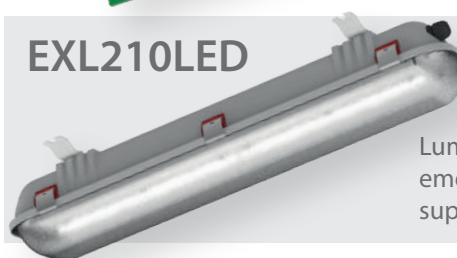
II 3G Ex ec IIC T6/T5 Gc
II 2D Ex tb IIIC T75°C/T100°C Db



Evacuation luminaire with illuminated pictogram. Housing made of anodized aluminum. Illuminated plate made of polycarbonate. As standard, the luminaire is equipped with a 3-hour emergency power supply module. The set includes 6 self-adhesive pictograms allowing to achieve many configurations.

EXL210LED

II 3G Ex ec op is IIC T5 Gc
II 2D Ex tb op is IIIC T60°C Db



Luminaire body made of GRP, polycarbonate diffuser. Optional version with a 3-hour emergency power supply module, adapted to work with a central battery, or a power supply with a DALI interface.

EXL310LED

II 3G Ex ec op is IIC T4 Gc
II 2D Ex tb op is IIIC T70°C Db



The body of the luminaire is made of stainless steel painted with modified powder paint. Polycarbonate diffuser. Optional version with a 3-hour emergency power supply module, adapted to work with a central battery or a DALI power supply.

ZONES 1,21 & 2,22



CEREAL WAREHOUSE

EXL380LED

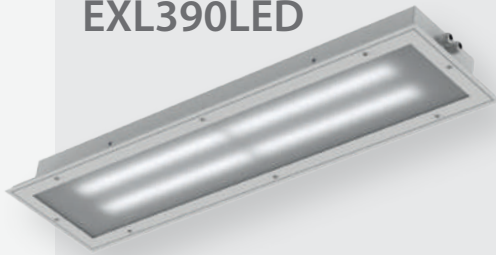


Ex II 3G Ex ec op is IIC T4 Gc
II 2D Ex tb op is IIC T80°C Db



Explosion-proof floodlight with LED modules and special optics. Designed to work in zones 21 and 2,22 of explosion hazard. The **maximum flux is nearly 21 800lm**. Housing made of brushed or powder coated (modified paint) stainless steel. Diffuser made of tempered glass. Optionally can be equipped with protective grid and DALI compatible driver.

EXL390LED



Ex II 3G Ex ec op is IIC T4 Gc
II 2D Ex tb op is IIC T70°C Db



Explosion-proof coffer luminaire with LED modules, designed to work in zones 21 and 2, 22 of explosion hazard. The luminaire is available in two different **shapes for 600x600 or 1200x300 modular ceilings**. Additional accessories allows to use it as surface mounted or recessed into a suspended ceiling. The housing is made of powder coated with modified paint stainless steel.

ZONES 1,21 & 2,22



EXPLOSION-PROOF EQUIPMENT

RK01



SKX14/1



SKX13/10



SKX12/34



SKX 13/1



SKX12/22



SKX12/33



SKX15/11-11





ATM Lighting sp. z o.o.

ul. Maszynowa 30A

80-298 Gdańsk

POLAND

tel: +48 58 347 51 07

office[atmlighting].pl

www.atmlighting.pl



2023/1